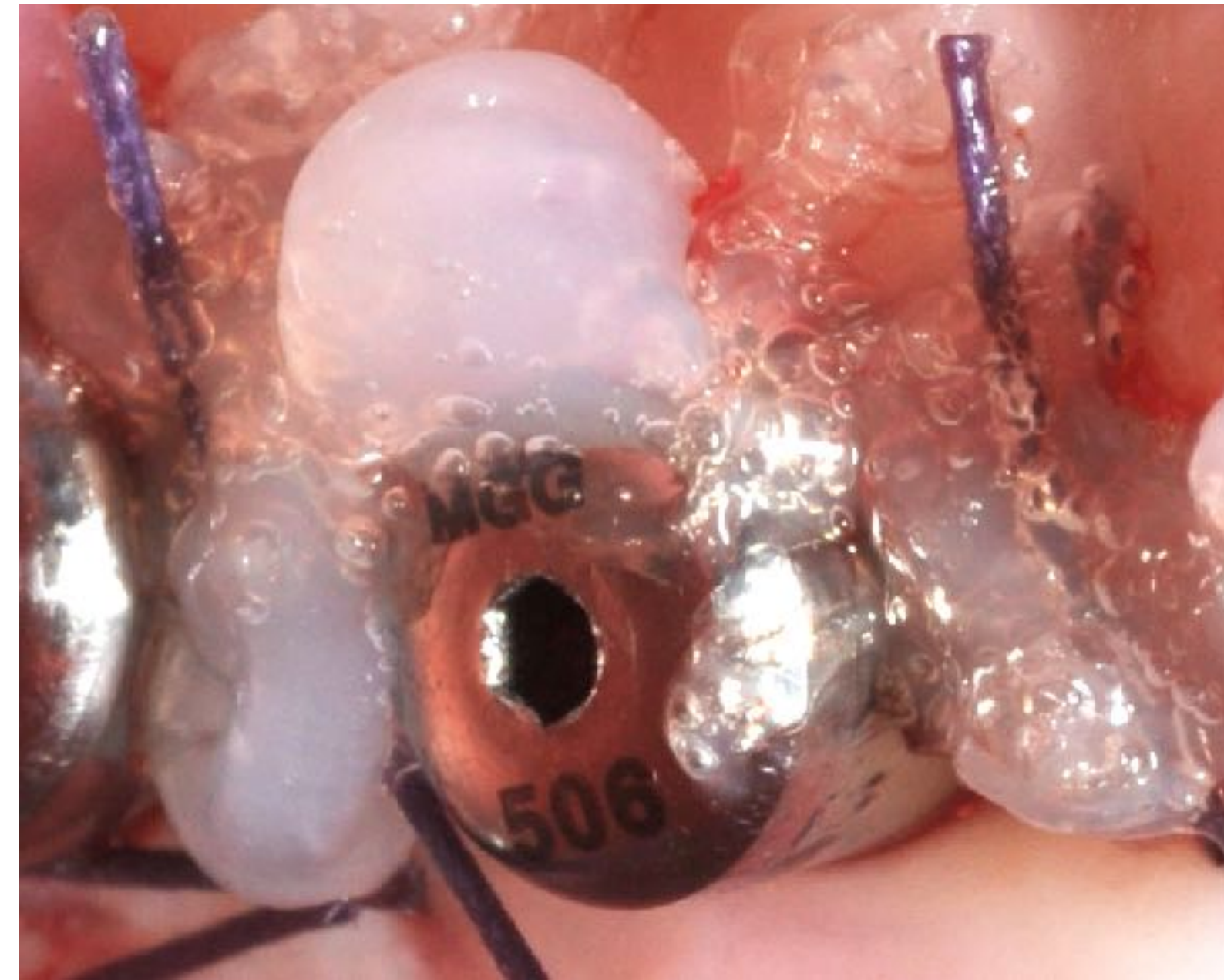


## Blue M and it's effect on wound healing



The effect of oxygen on wound healing  
Creating keratinized tissue around implants



Irfan Abas M.Sc.

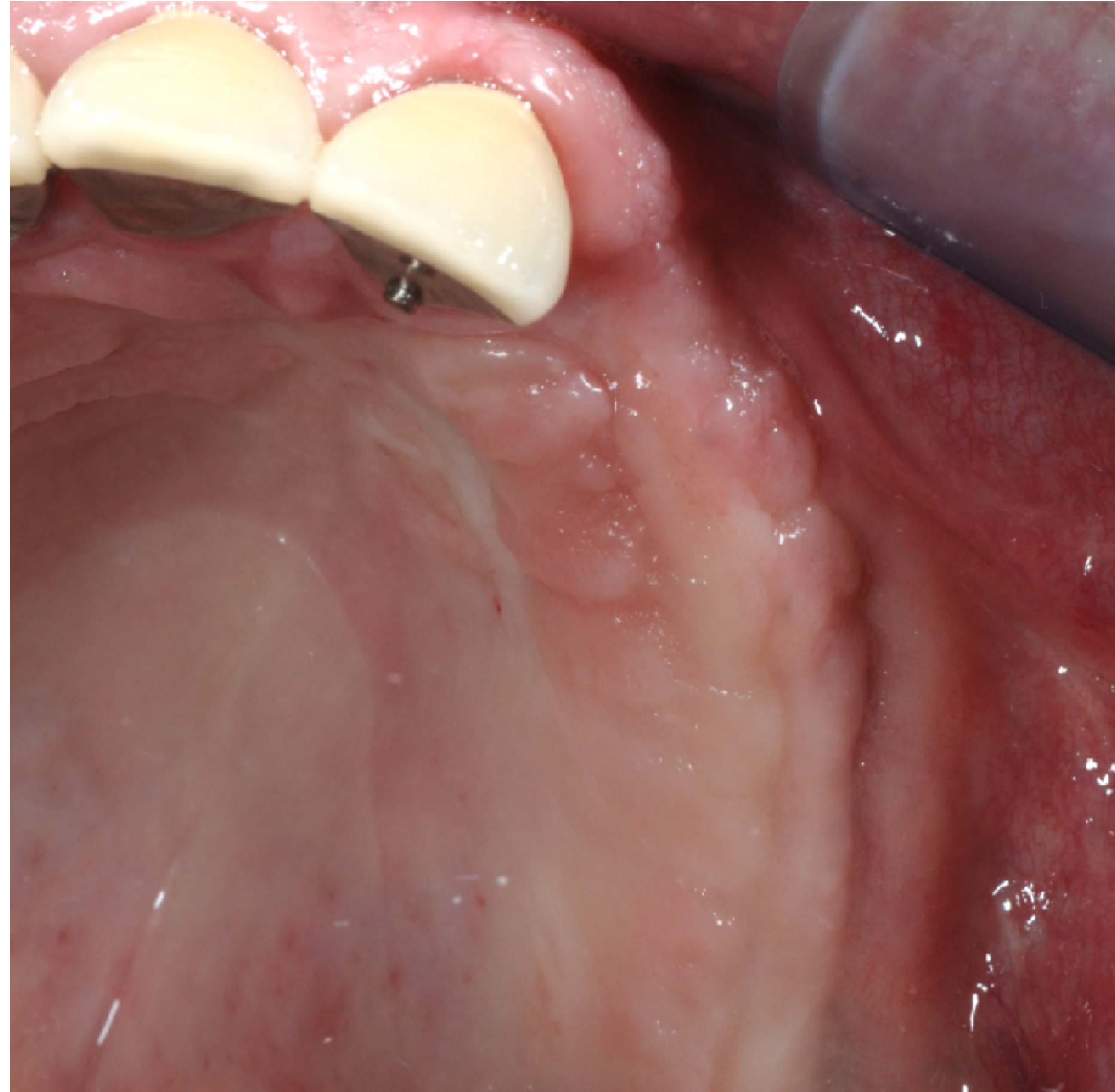
## C.V.

2008 University of Amsterdam: graduated dentist  
2014 Radboud University Nijmegen: specialist in Reconstructive Dentistry  
2015 Specialist in Restorative Dentistry (NVvRT)  
2016 European Specialist in Prosthodontics (EPA)  
2016 MINEC Knight MegaGen Benelux  
2017 Editor for Dental Magazine TandartsPraktijk Springer Media  
2017 Chairman MINEC Netherlands  
2017 Instructor for Advanced Implant Educators U.S.

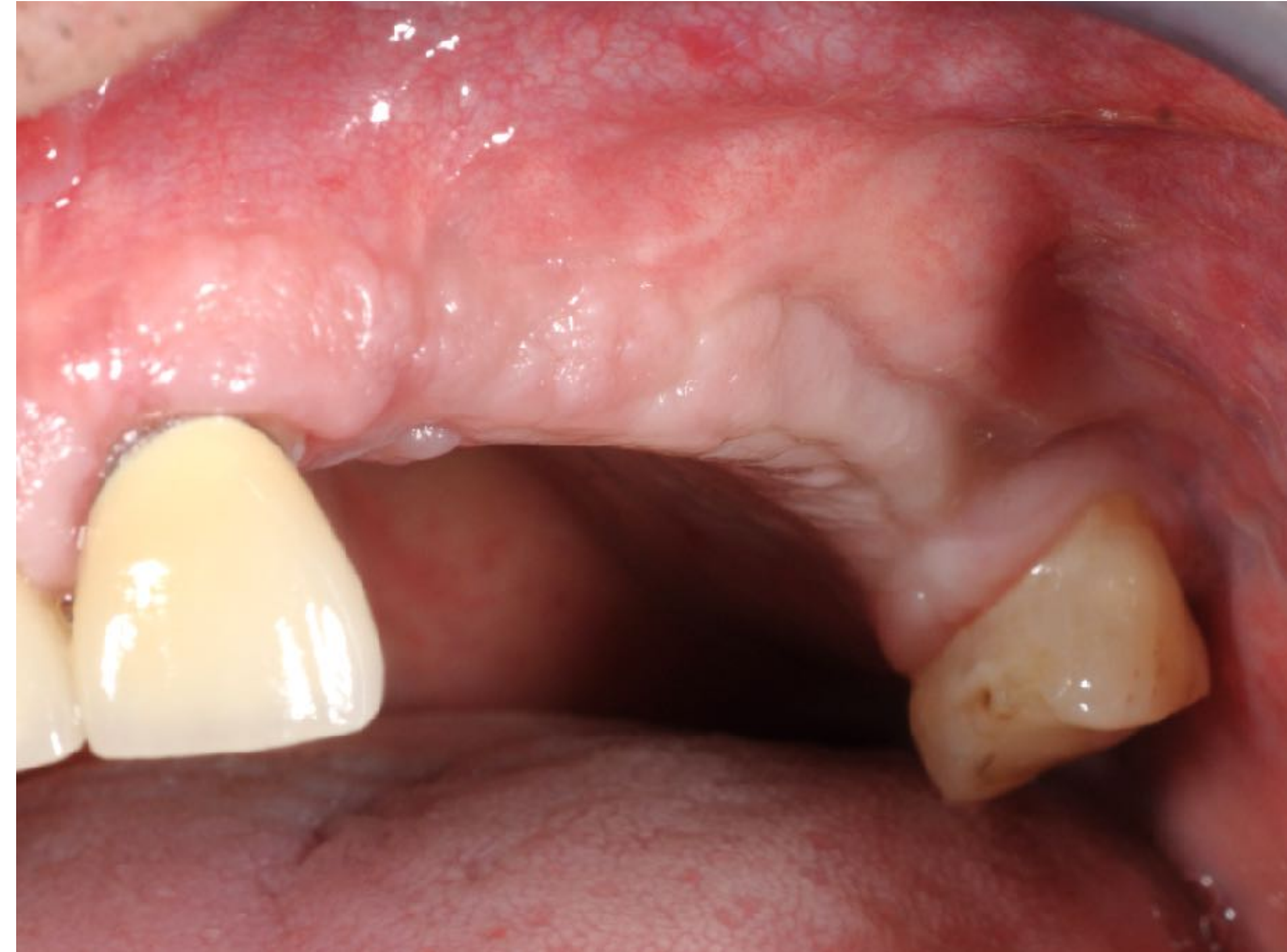
Private practice specialized in Oral Implantology & Restorative Dentistry



6 months post operative after implants  
placement and extensive GBR

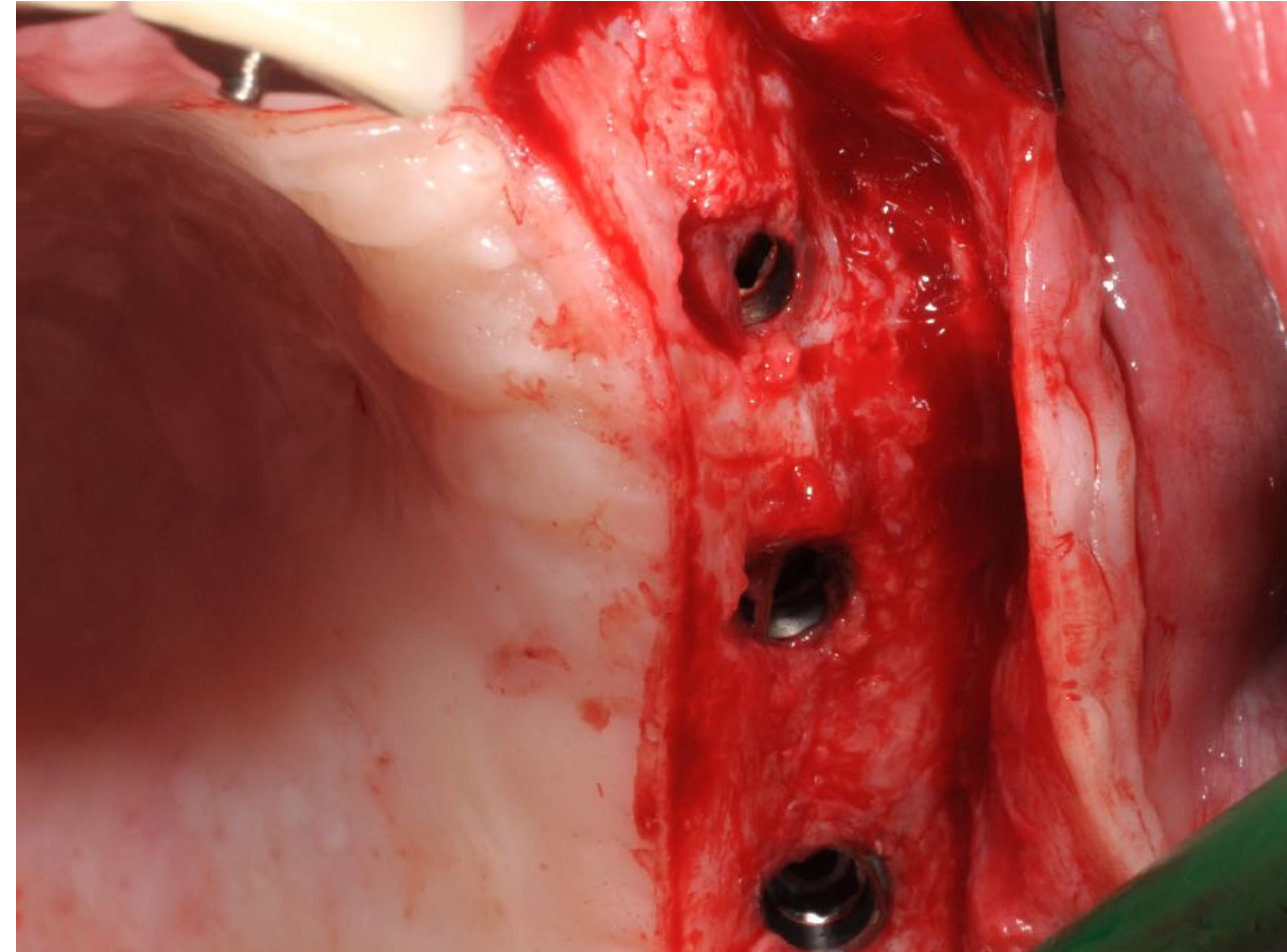
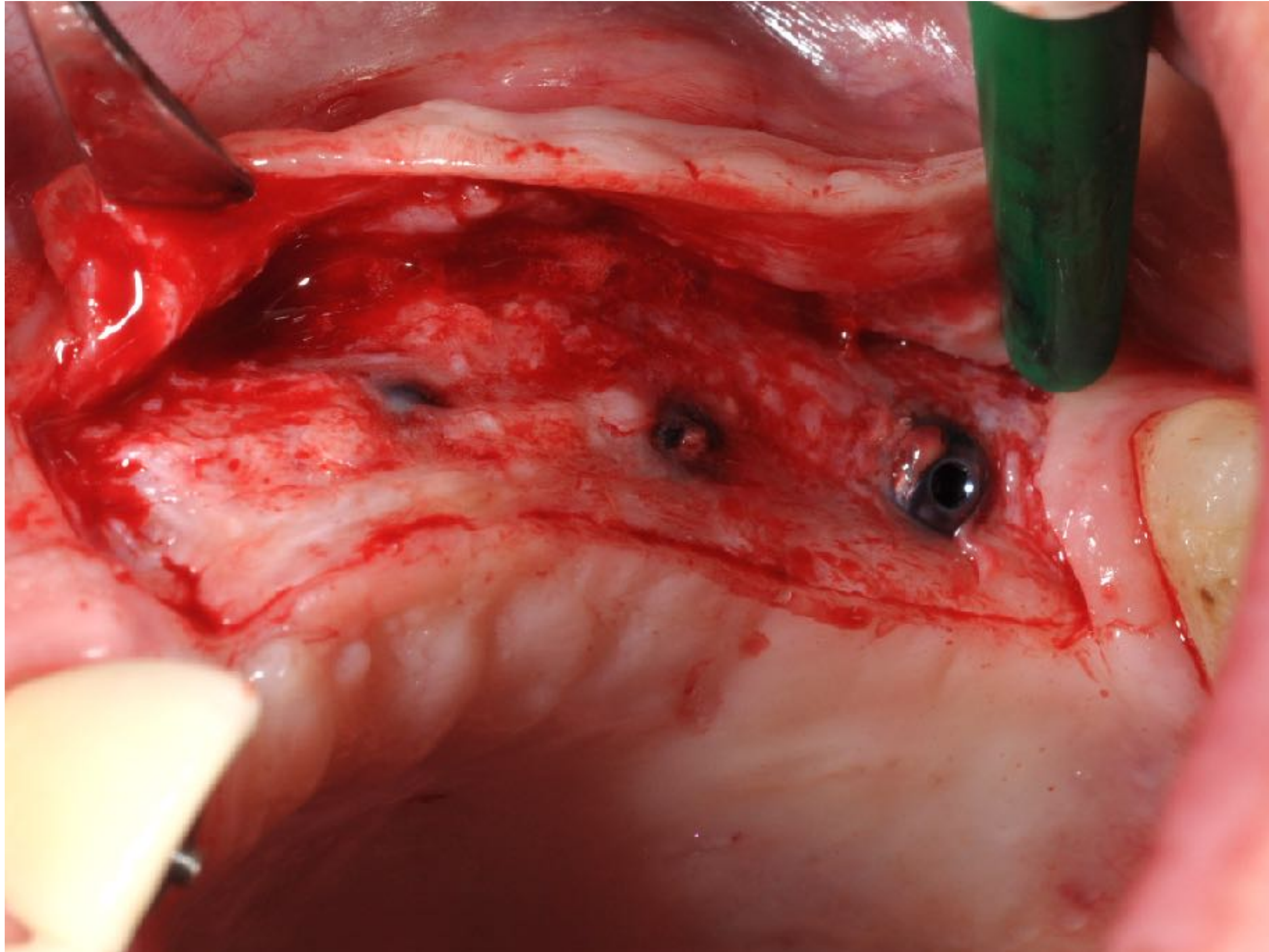


Buccal view



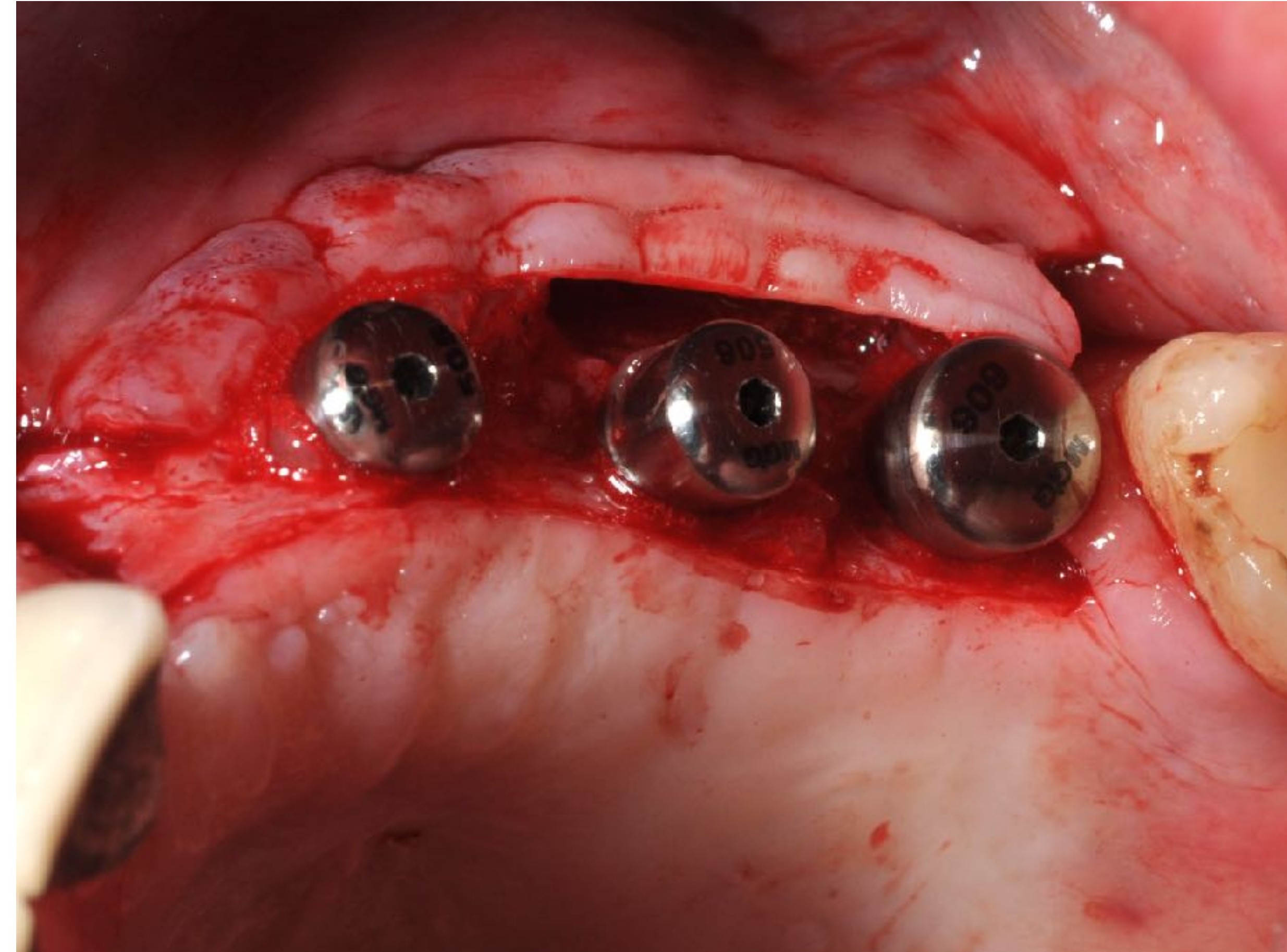
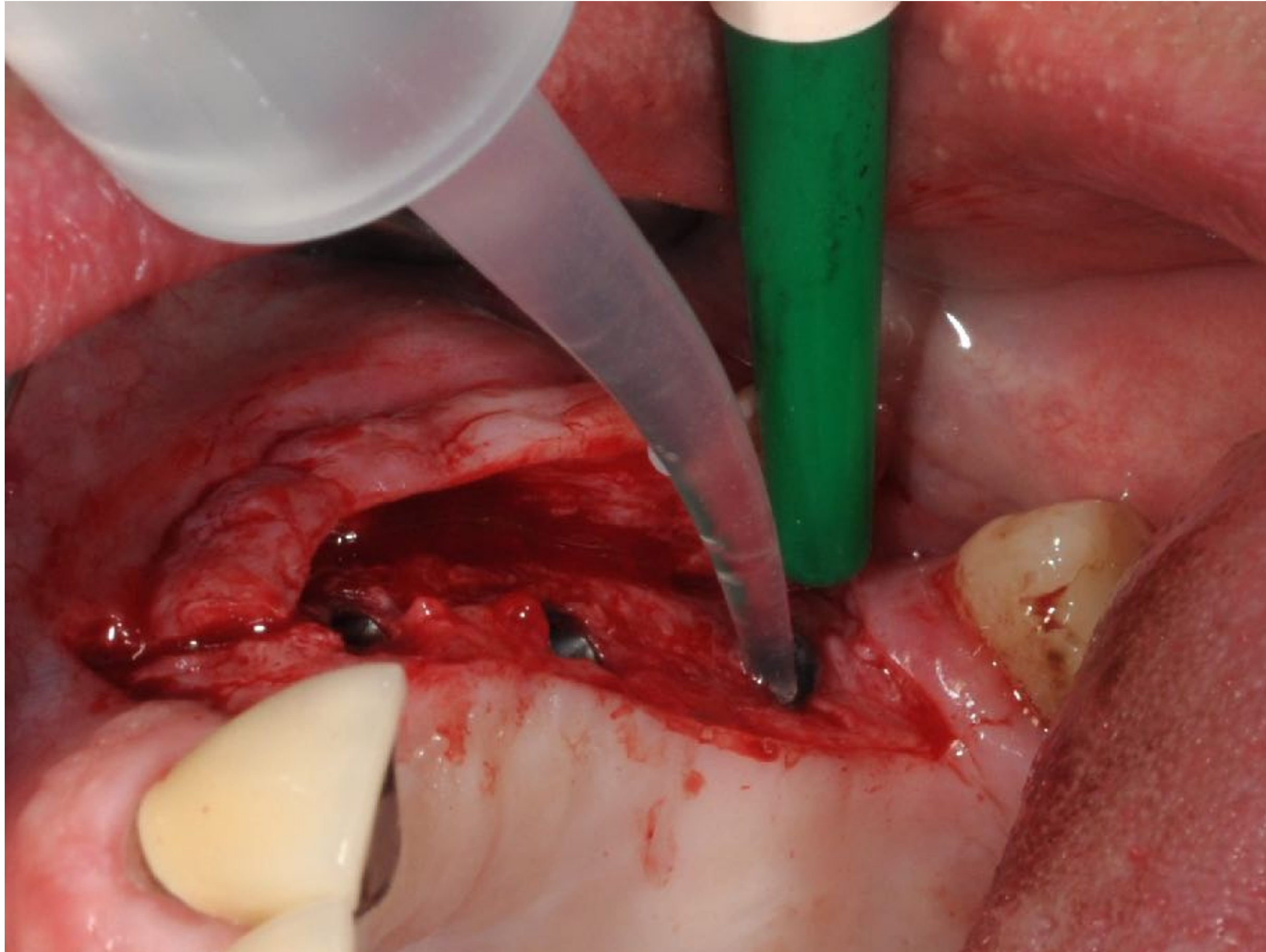


Split thickness flap  
Implants uncovered





Rinse implants with Blue M mouthwash  
Healing abutments connected





Sutured  
Add Blue M oral gel around healing abutments





Oxygen  
bubbles  
immediately  
visible





Post  
operative



5 days  
po



2 weeks  
po



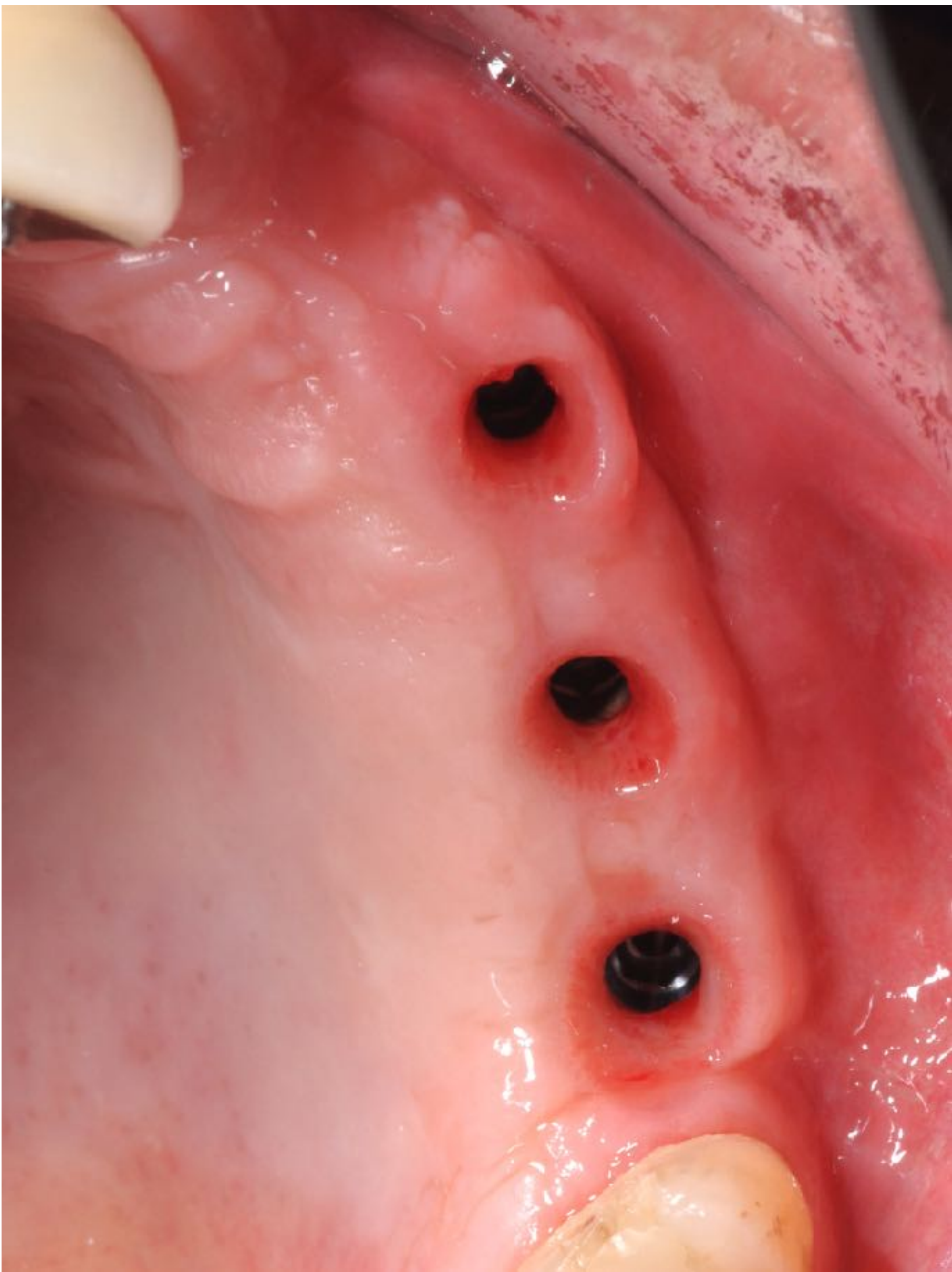
3 months  
po



3 months  
po







Gained  
keratinized  
soft-tissue