

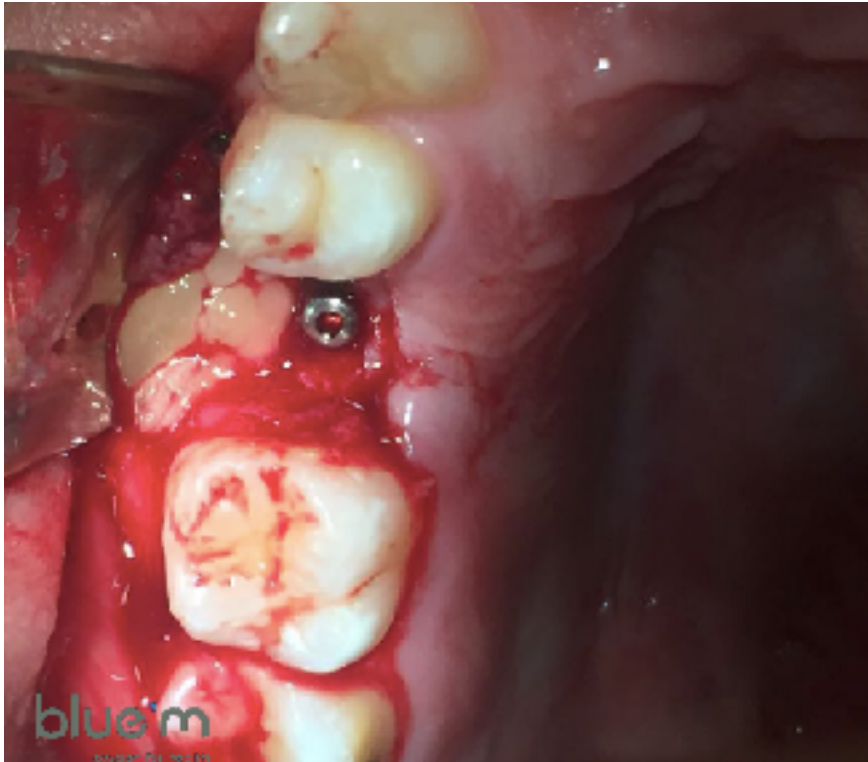
## Implant placement of the 15 and 25: a 7 days follow up

### Dr. Emilio Marquardt



- Studied Dentistry at the University de Varzea Grande
- Specialised in Oral and maxillofacial surgery and traumatology
- Professor at the University and lecturer of many courses
- On call for surgery at the Hospital Pronto-Socorro de Cuiaba
- Member of Hospital Santa Rosa de Cuiaba

## Implant placement of the 15 and 25: a 7 days follow up



- Patient with tooth absence of the 15 and 25
- L-PRF membrane placement
- Placement of a Neonatal cone implant

## Implant placement of the 15 and 25: a 7 days follow up



- Immediately post-operative
- Sutured with 4.0 nylon
- Antibiotic treatment (novamox)
- Analgesic cream is prescribed as a painkiller

## Implant placement of the 15 and 25: a 7 days follow up

4 days post-operative



- Patient used chlorhexidine on his own account
- Gingival is swollen, red and retractable
- Dehiscence of the sutures



4 days post-operative

- Use of the chlorhexidine was suspended
- Patient was instructed to rinse with the blue<sup>®</sup>m mouthwash 3 times a day for 2 minutes





## 4 days post-operative

- Patient was instructed to use the blue<sup>®</sup>m oral gel for better wound healing
- A tray was made to apply the blue<sup>®</sup>m oral gel in to be able to stay in place for 20 minutes





The result after 7 days applying the blue<sup>®</sup>m oral gel and rinsing with the blue<sup>®</sup>m mouthwash



- Neovascularisation caused by the active oxygen
- Re epithelialization of the tissue occurred



The result after 4 days  
rinsing with chlorhexidine



The result after 7 days  
applying the blue<sup>®</sup>m oral  
gel and rinsing with blue<sup>®</sup>m  
mouthwash